



# The Advantages

- |  |  |   |
|--|--|---|
| Loose lay system<br>No adhesive required | Suitable for trucks,<br>HGV's and heavy<br>duty applications | Competitive rates                                       |
| Easy to install                          | We offer a free site survey                                  | No damp proof membrane,<br>screed or adhesives required |
| Reduces dust and noise                   | Excellent durability and<br>slip resistance                  | Warm - insulates the floor                              |
| Fire retardant - Bfl S1                  | Reduces fatigue  | Easy to clean and maintain                              |
| Lower life cycle cost                    | Easy to move and reuse                                       | CE accredited   |
| Environmentally sustainable              | Choice of 10 colours   | UK Manufacturers  |

## INDUSTRIAL FLOORING

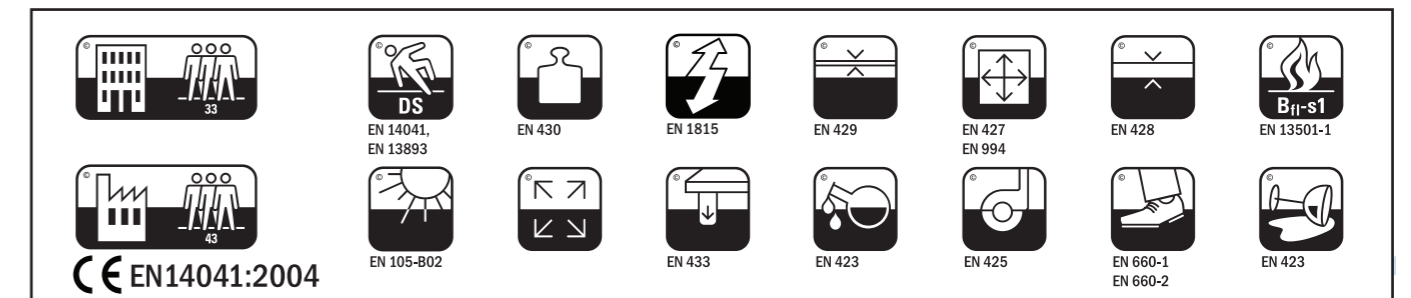
Screwdriving technology

Workspace Organisation

Safety & Ergonomics



# Technical Certifications



# Technical Specification

Technical Specification	Norm	Industrial	Commercial
Tile Dimensions		Textured: 7mm - 508x508mm Textured: 9mm - 508x508mm Studded: 7mm - 508x508mm	Textured: 415mm - 508x508mm Excel: 5 + 7mm - 508x508mm Studded: 5mm - 508x508mm Chequer: 4mm - 508x508mm Slate: 6mm - 450x450mm
Weight		7mm: 9.2kg/m <sup>2</sup> 9mm: 13.2kg/m <sup>2</sup>	4mm: 6.4kg/m <sup>2</sup> 5mm: 8kg/m <sup>2</sup> 7mm: 9.21kg/m <sup>2</sup>
Hardness	ISO868	95 Shore A	92 Shore A (Available in 82 Shore A by request)
Material		PVC SGI 1.45	PVC SG 1.45
Thickness	BS EN 428	7mm +/- 0.2mm 9mm +/- 0.2mm	4mm, 5mm & 7mm +/- 0.2mm
Abrasion	BS EN 660-2	Wear Group T	Wear Group T
Castor Wheel	BS EN 425	No Damage	No Damage
Indentation	BS EN 433	0.1mm	0.1mm
Fire Class	EN 13501-1	BFLS1	BFLS1
Electrical Resistance	BS EN 1081	s 1Q12Q	s 1Q12Q
Anti Slip	BS EN 13893 Deutsche Norm DIN 51130	Anti Slip DS R10	Anti Slip DS R10
Chemical Resistance	BS EN 423	Good	Good
		Hydrochloric Acid • 96% Ethanol • 96% Methanol • 100% Acetic Acid • 100% Nitric Acid 69% Sulphuric Acid • 98% Chromic Acid • 40% Toluene, Trichloethulene, Acetone, Engine Oils, Gasoline, Urine.	
Light Fastness (Blue Wool Standard)	BS EN 20105- B02	7BWS / 5GSR	7BWS / 5GSR
Thermal Conductivity	ISO 8302	7mm: 0.3807 m <sup>2</sup> K/W 9mm: 0.3807 m <sup>2</sup> K/W	5mm: 0.277 m <sup>2</sup> K/W 4mm: 0.218 m <sup>2</sup> K/W
Electrostatic Behaviour	BS EN 1815	2kV	2kV
Flexibility	BS EN 435	Flexibility No Cracking	Flexibility No Cracking
Dimensional Stability Before Exposure to Heat	BS EN 434	0.11%	0.11%
Dimensional Stability After Exposure to Heat	BS EN 434	Average 0.15	Average 0.15



INDUSTRIAL & WAREHOUSE

Your vision  
realised.



# Industrial Factory & Warehouse

Industrial Factory & Warehouse  
Textured 7mm & 9mm Dovetail

# INDUSTRIAL



## Industrial Flooring

The range of industrial interlocking floor tiles are better than epoxy/resin and here's why..

Manufactured in the EU, from hard wearing PVC, industrial interlocking floor tiles provide cost effective, robust and hard wearing floor tiles that have been specifically designed for areas where fork trucks, pallet trucks and stillages are in constant use.

The industrial floor coverings require minimal up keep, offer excellent anti slip, anti-fatigue and impact resistance solutions.

### Unique Dove Tail Interlocking System

The industrial floor tile range all have the unique, more robust and superior dove tail interlocking join which allows for quick and easy installation. This unique dove tail join also offers an almost seamless floor when installed.

The interlocking flooring solution can be utilised to cover uneven, damp and dusty subfloors with little or no subfloor preparation.



Before

After

## Colours



# INDUSTRIAL

## Product Type



Textured tile  
7mm & 9mm Dovetail interlock

Chequered tile  
7mm & 9mm Dovetail interlock

Studded tile  
7mm & 9mm Dovetail interlock



ESD/  
Anti Static

5mm & 7mm

# ESD



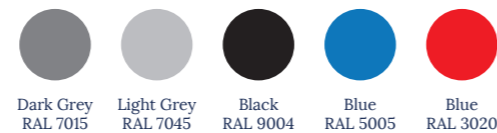
## ESD/Anti Static Flooring

Conductive, dissipative and anti-static interlocking floor tiles are available for all sectors of industry. ESD tiles meet IEC 61340-5-1:2016.

The ESD floor tiles are static dissipative or conductive flooring designed for use in areas where components or individuals need to be protected from the risk of anti-static charge.

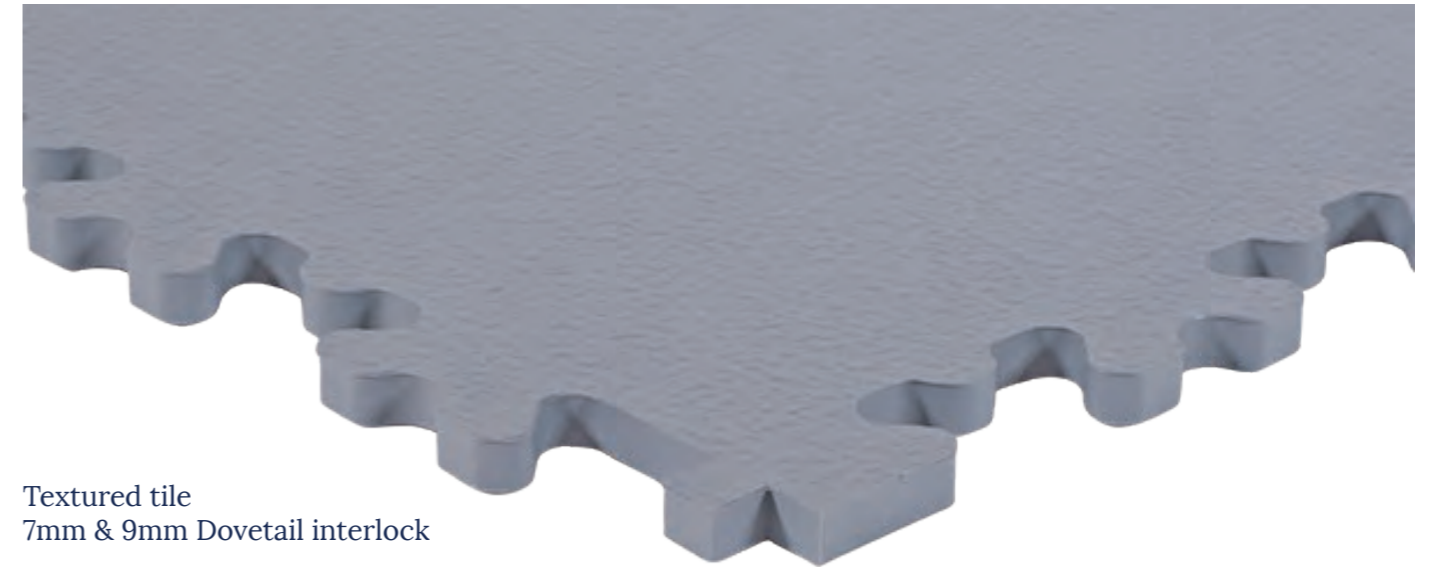
The ESD interlocking floor tiles are manufactured using an injection moulding process guaranteeing a permanent ESD performance and used in accordance with an earthing kit and conductive matrix will create a safe conductive floor that can be used as your primary ground.

## Colours

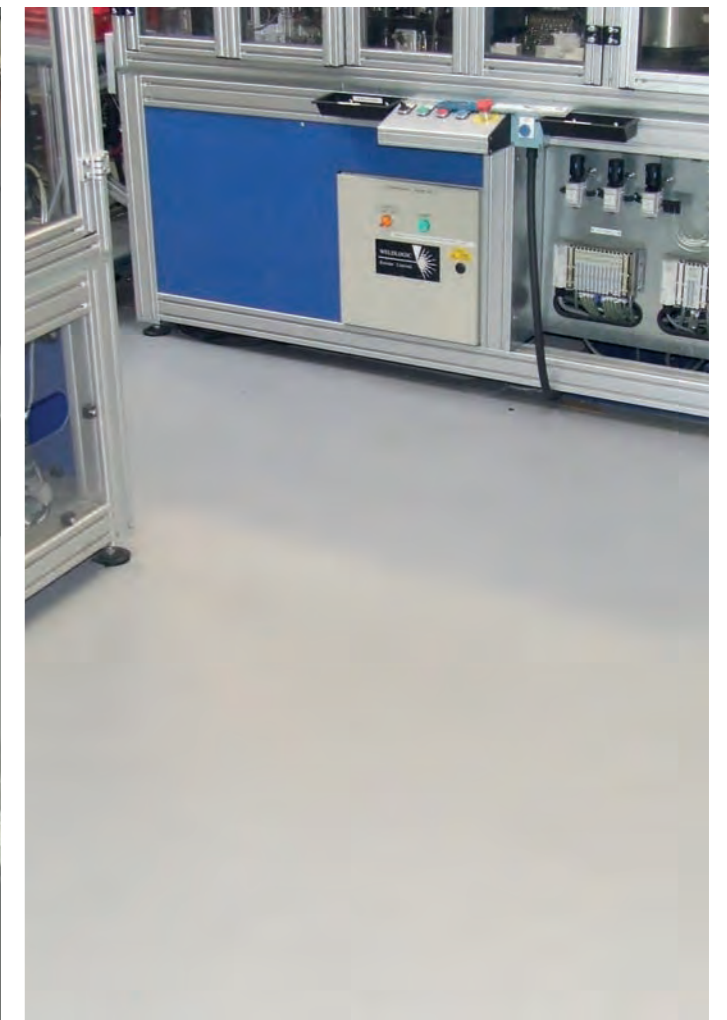


# ESD

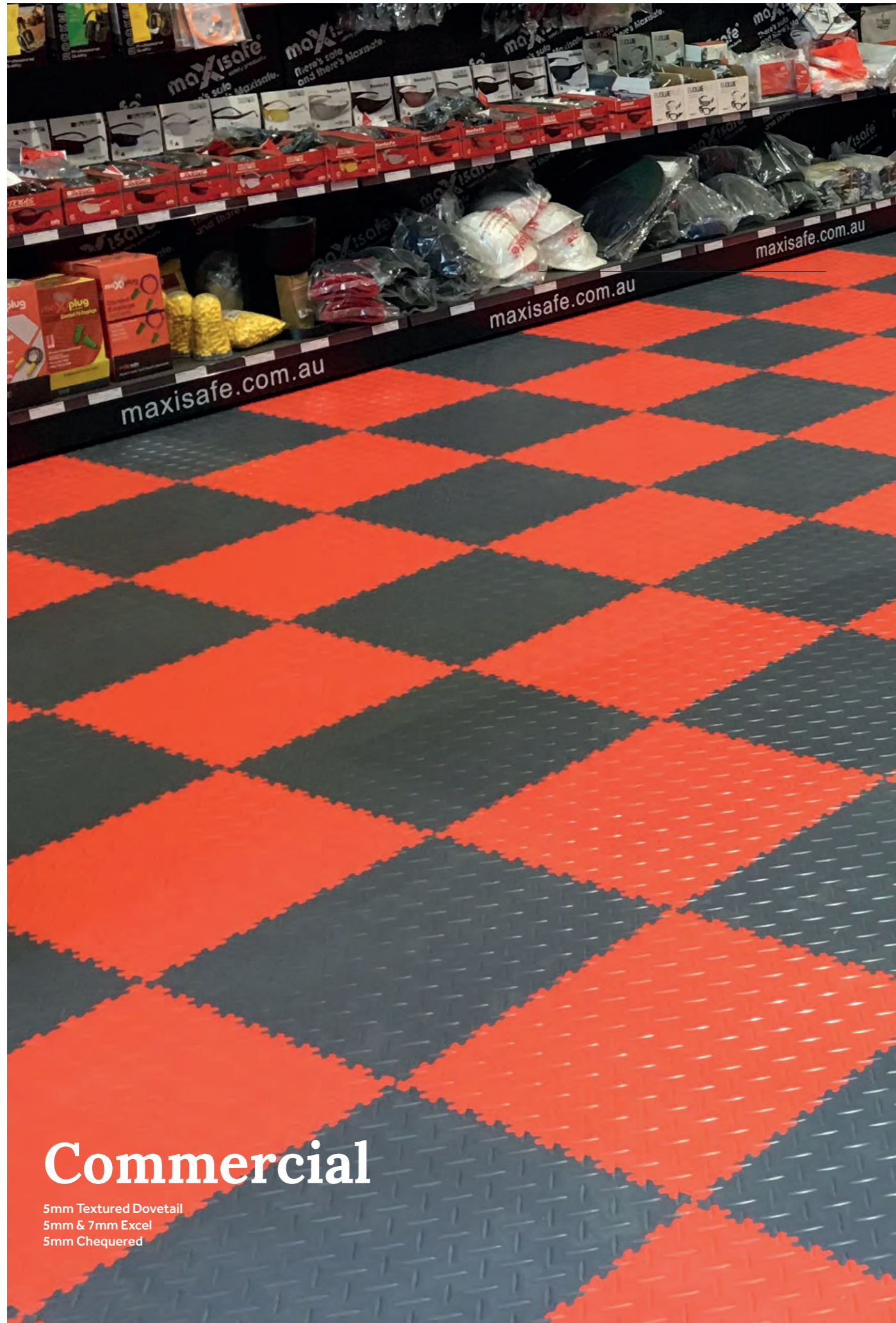
## Product Type



Textured tile  
7mm & 9mm Dovetail interlock



# COMMERCIAL



## Commercial

5mm Textured Dovetail  
5mm & 7mm Excel  
5mm Chequered



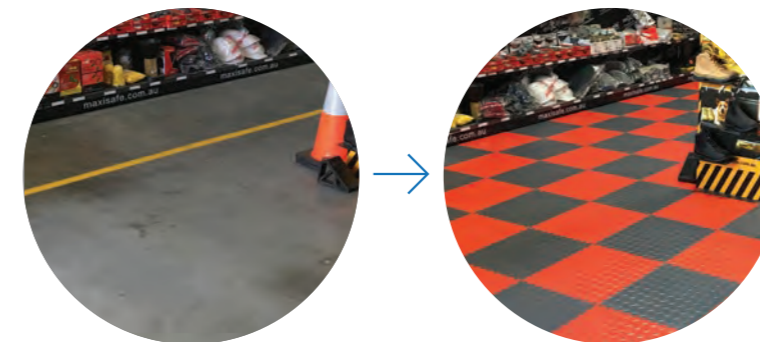
## Commercial Flooring

The range of commercial and retail interlocking floor tiles offer an excellent alternative to traditional retail floors such as carpet and sheet vinyl.

The commercial and retail interlocking floor tiles offer excellent anti slip properties making them a safe and ideal flooring solution for busy retail environments.

The range of commercial floor tiles comes in two ranges, the standard range and the Design Collection Range. There is a variety of textures, colours and thicknesses within each of these ranges.

All floor tiles are CE accredited and have been successfully installed in many of Europe's leading commercial and retail premises.



Before

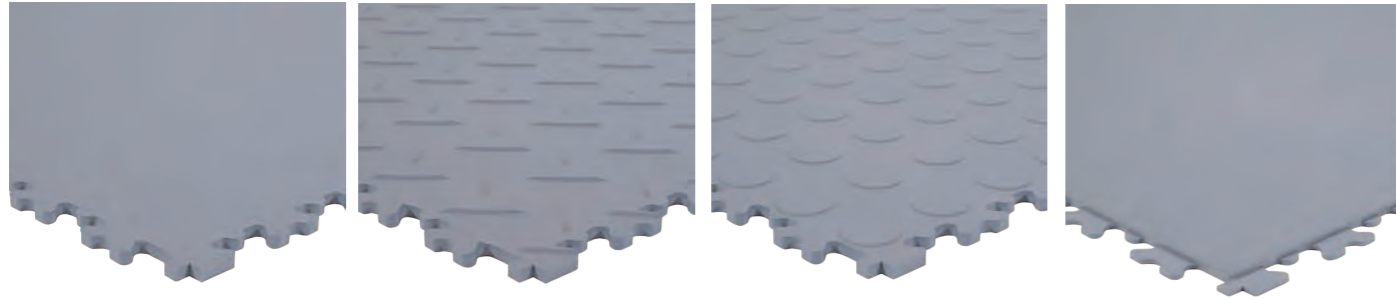
After

## Colours



# COMMERCIAL

## Product Type

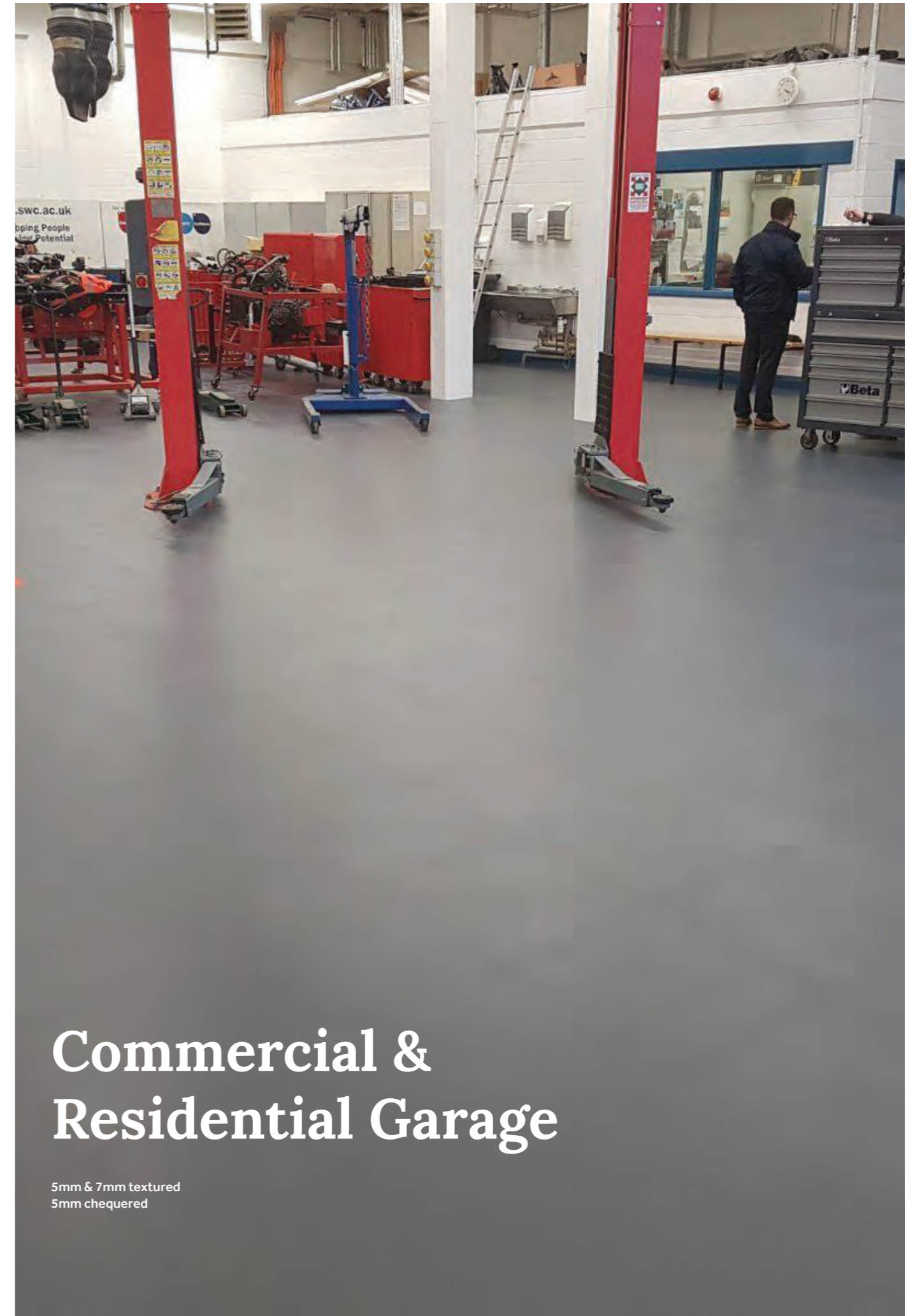
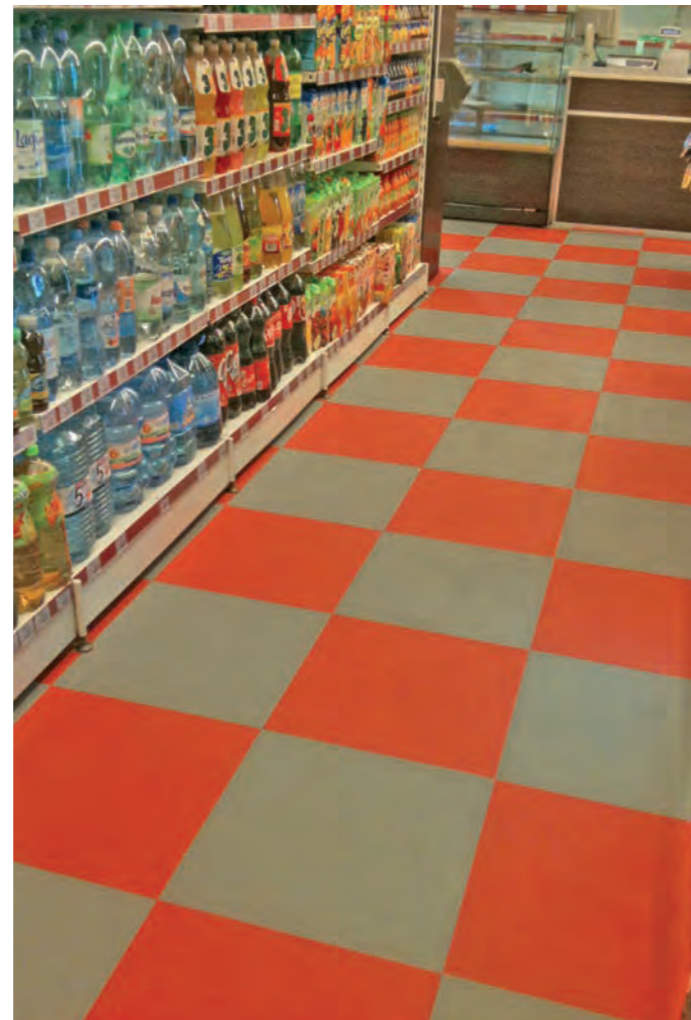


Textured tile  
4mm & 5mm Dovetail  
interlock

Chequered tile  
4mm & 5mm  
Dovetail interlock

Studded tile  
5mm Dovetail

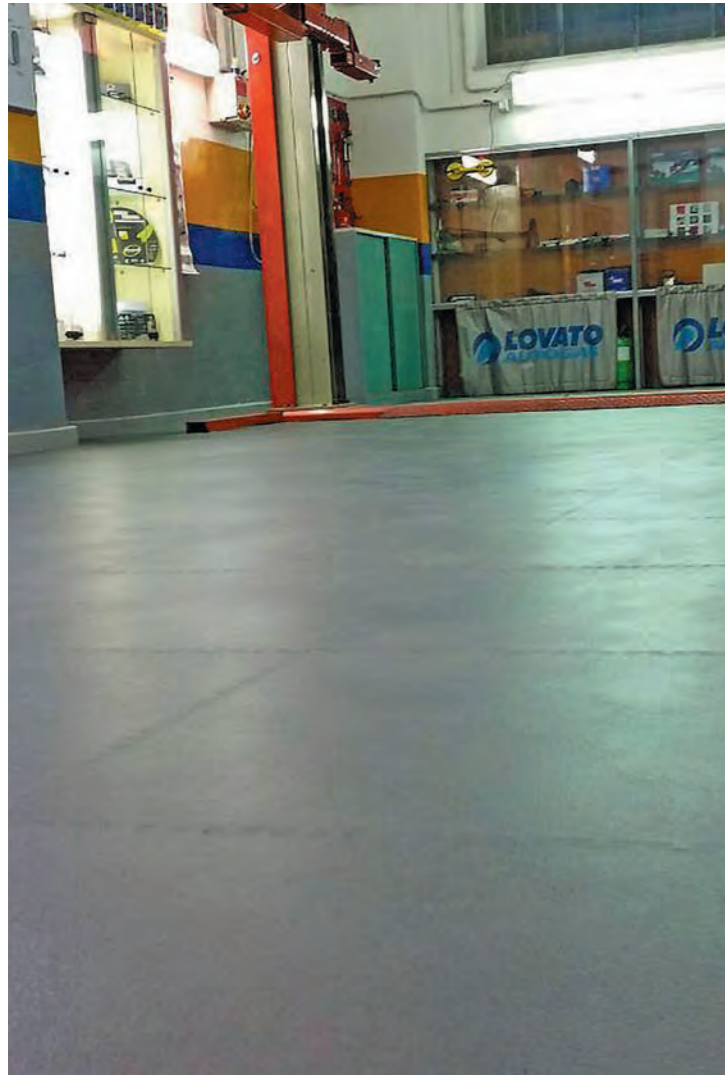
Excel tile  
5mm & 7mm  
Hidden Join



## Commercial & Residential Garage

5mm & 7mm textured  
5mm chequered

# COMMERCIAL & RESIDENTIAL GARAGE



## Garage Flooring

The range of garage interlocking floor tiles are the perfect flooring solution for commercial or residential garages.

The interlocking floor tiles are easy to install and maintain, and are impact resistant making them a suitable flooring system in busy work environments.

All interlocking floor tiles offer an R10 anti slip rating, are fire retardant and provide an excellent level of installation and noise and dust reduction.

All floor tiles are CE accredited and have been successfully installed in many domestic and commercial garages.



Before



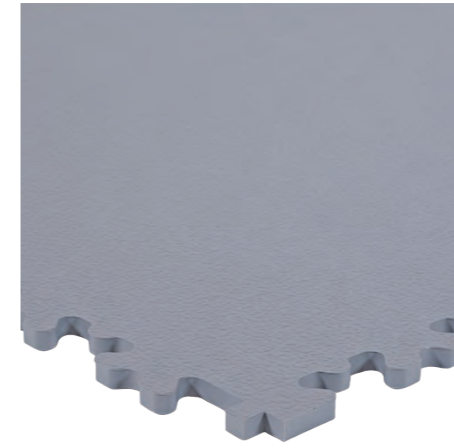
After

## Colours

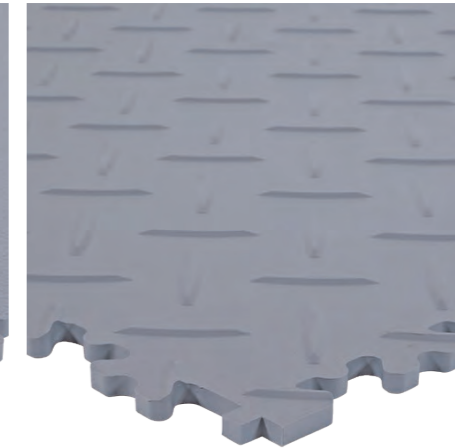


# COMMERCIAL & RESIDENTIAL GARAGE

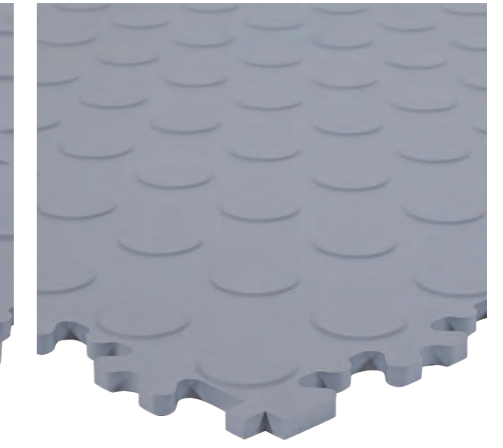
## Product Type



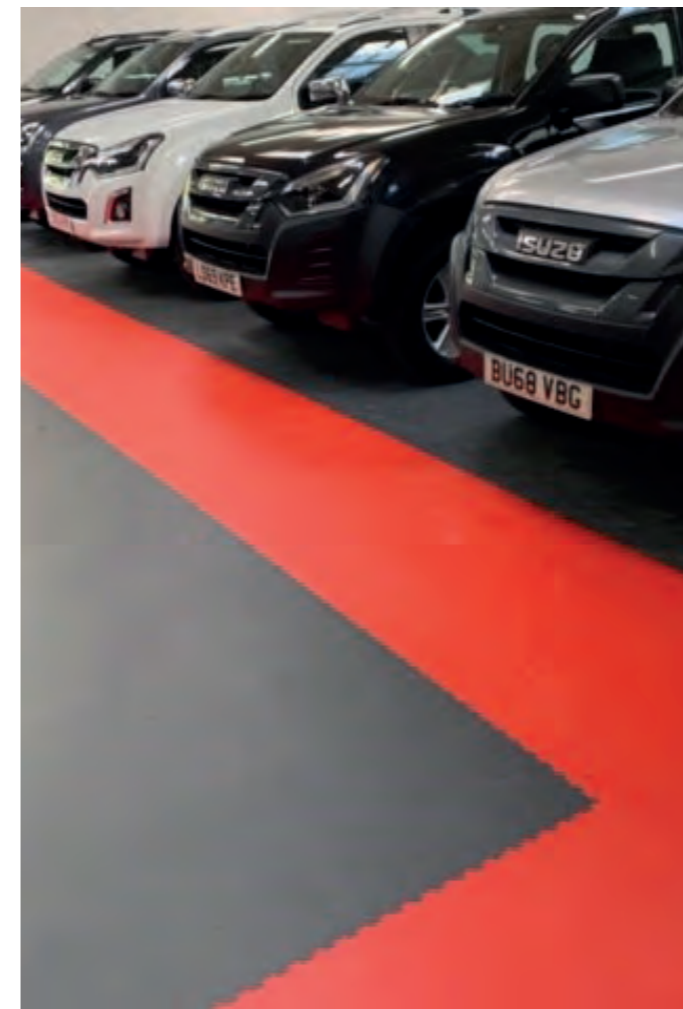
Textured tile  
5mm & 7mm Dovetail interlock



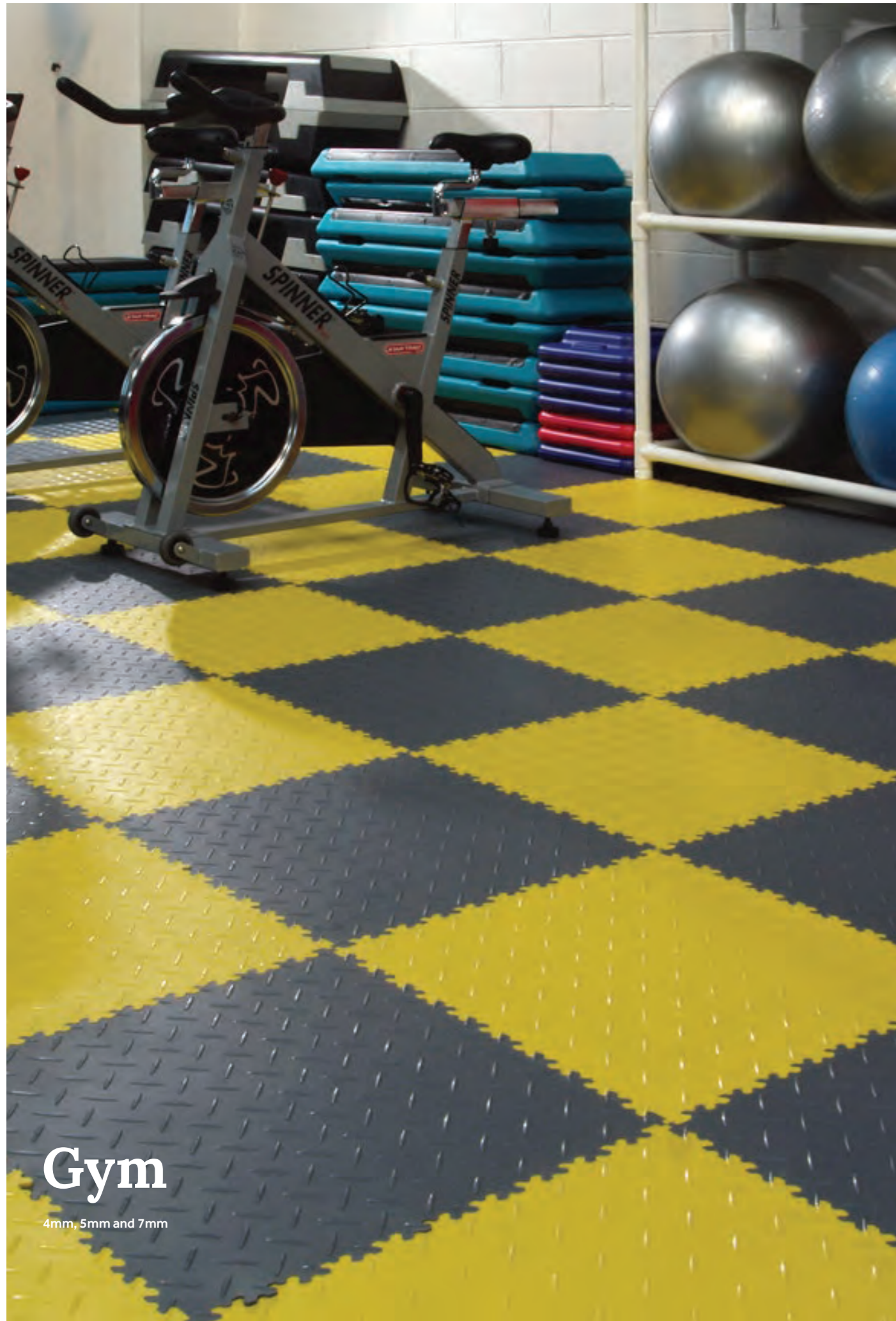
Chequered tile  
5mm & 7mm Dovetail interlock



Studded tile  
5mm & 7mm Dovetail interlock







# GYM

## Gym Flooring

The range of gym interlocking floor tiles are the perfect flooring solution for any fitness centre or home gym. Combining a professional finish in 10 bright and vibrant colours with an anti-slip surface that is both warm and soft to walk on.

The gym flooring solution is quick and easy to install and can be utilised to cover uneven, damp and dusty subfloors with little or no subfloor preparation.

The 7mm floor tile has been designed to cope with the pressures of heavy gym equipment and is impact resistant to cope with heavy drop weights. Suitable as flooring for a home gym or commercial premises.



Before

After

## Colours



# GYM

## Product Type



Textured tile  
5mm & 7mm Dovetail interlock

Chequered tile  
5mm & 7mm Dovetail interlock

Studded tile  
5mm & 7mm Dovetail interlock

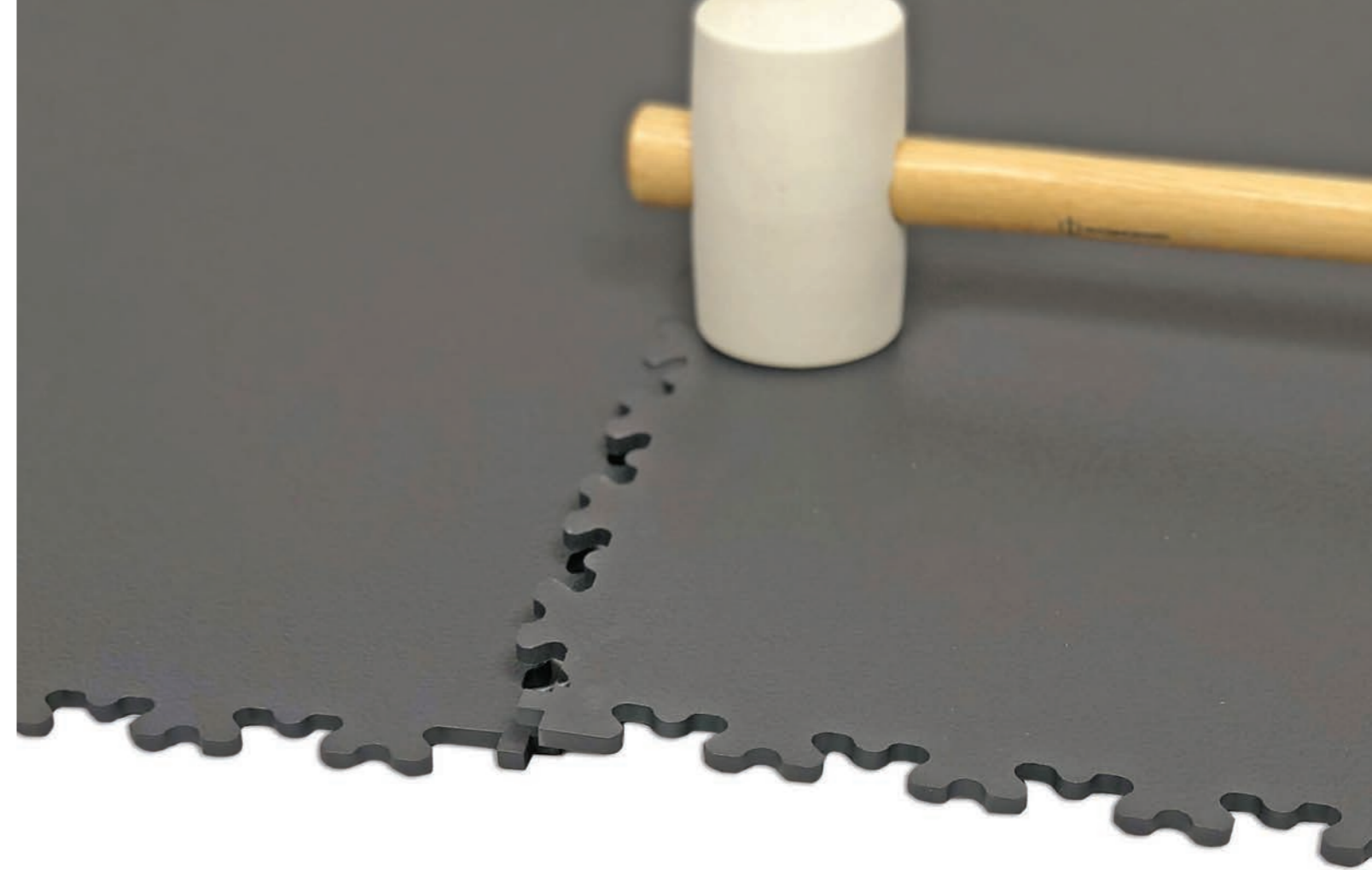


## Product Type



# Textured Dovetail

4mm, 5mm  
7mm & 9mm



## Textured Dovetail

This is our most popular and successful industrial interlocking floor tile. The unique and more robust superior dove tail interlocking join which is almost invisible when installed, means it offers a better flooring solution than epoxy/resin.

Can be used in light commercial applications (4mm & 5mm) factory and warehouse installations (7mm) and in heavy industrial applications (9mm).


## Colours



The hard wearing range of industrial interlocking floor tiles are loose lay, quick and easy to install and require minimal subfloor preparation. They are made from hardwearing PVC material that can withstand high point loading and impact and come with a 10 year product warranty.

Available in **10 standard colours**.

### Key Benefits:

-  Quick & easy to install
-  No damp proof membrane, screed or adhesives required
-  Reduced VOC emissions
-  Non-Slip - R10



# Excel (Hidden Join)

5mm & 7mm

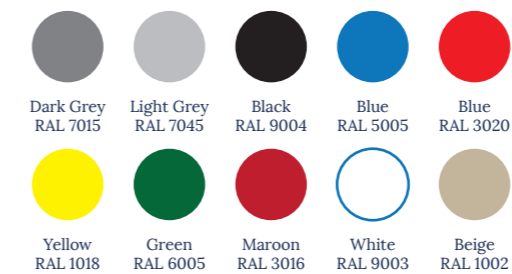


## Excel (Hidden Join)

Available in 5mm and 7mm thickness. The Excel interlocking floor tile has all the same characteristics as the standard textured dove tail tile except it benefits from a hidden join interlocking system with a bevelled edge which offers a more traditional vinyl tile appearance.

Available in two thicknesses, the 5mm interlocking floor tile is suitable for foot traffic areas only and the 7mm interlocking floor tile is suitable for foot traffic and light wheeled traffic.





## Colours



The Excel interlocking floor tiles are loose lay, quick and easy to install and require minimal sub floor preparation. They are made from hard wearing PVC material that can withstand high point loading and impact and come with a 10 year product warranty.

Available in 10 standard colours.

### Key Benefits:

-  Quick & easy to install
-  No damp proof membrane, screed or adhesives required
-  Reduced VOC emissions
-  Non-Slip - R10



# Slate (Hidden Join)

6mm



## Slate

Available in 6mm only. The Slate interlocking floor tile has been developed to satisfy the requirements of commercial, residential and domestic applications.

The unique Slate surface finish with a hidden join and bevelled interlock has the appearance of traditional ceramic tiles and the benefits of a vinyl product.

Slate interlocking floor tiles are suitable for foot traffic only.

## Colours

				
Dark Grey RAL 7015	Light Grey RAL 7045	Black RAL 9004	Blue RAL 5005	Blue RAL 3020
				
Yellow RAL 1018	Green RAL 6005	Maroon RAL 3016	White RAL 9003	Beige RAL 1002

The Slate interlocking floor tiles are loose lay, quick and easy install and require minimal subfloor preparation. They are made from hardwearing PVC material that offers excellent anti-slip properties and are particularly comfortable under foot and come with a 10 year product warranty.

Available in standard colours.

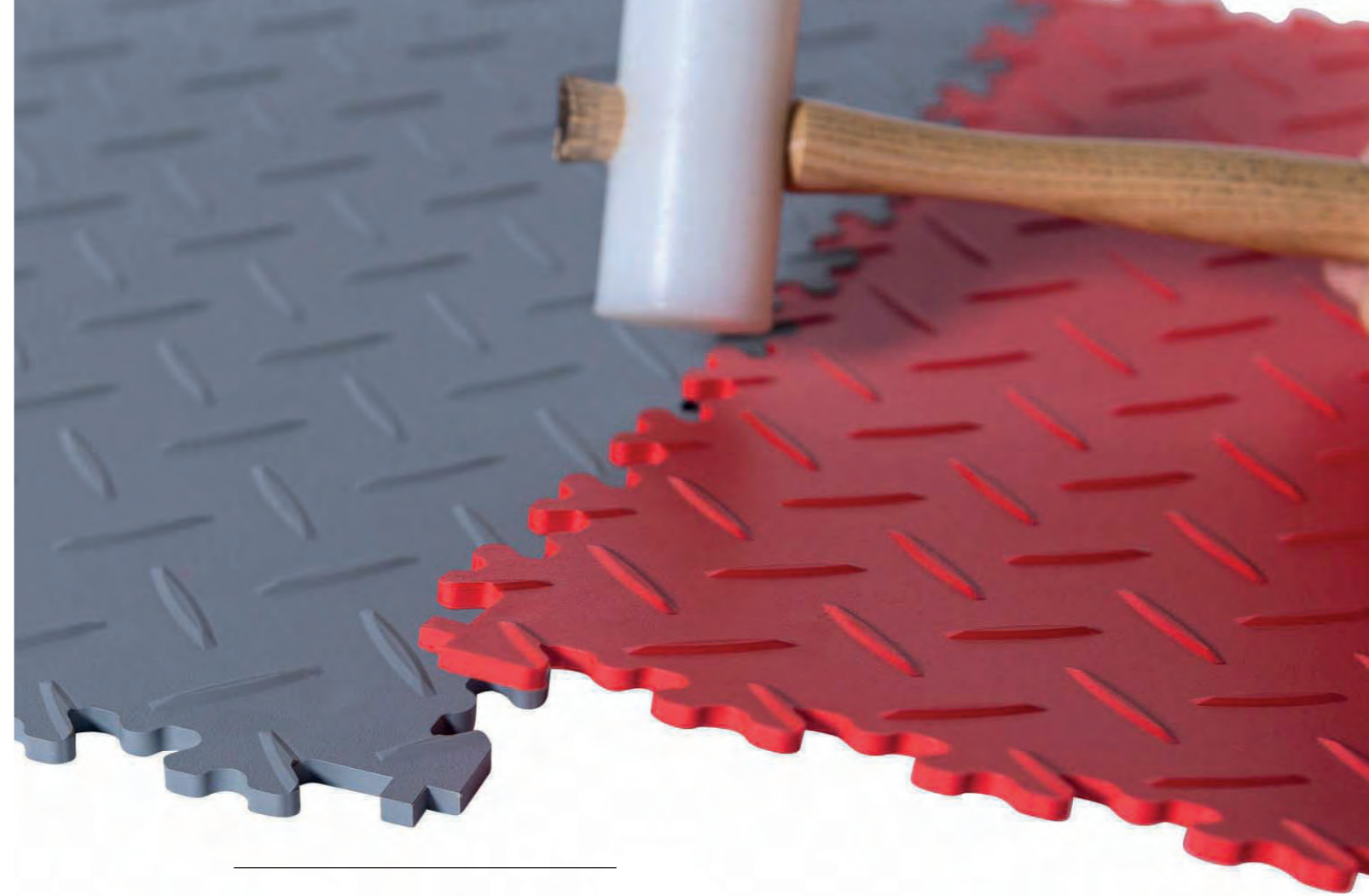
### Key Benefits:

-  Quick & easy to install
-  No damp proof membrane, screed or adhesives required
-  Reduces dust and noise
-  Warm - insulates the floor
-  Easy to clean and maintain



# Chequered

4mm, 5mm & 7mm



## Chequered

The chequered interlocking floor tile is available in 4mm & 5mm thickness.

The Chequer Plate interlocking floor tile has all the same characteristics as our standard textured dove tail tile except it benefits from an interlocking system with matching key ways, which when installed renders the interlocking join virtually invisible resulting in an almost seamless floor.

The 4mm chequered floor tile is suitable for foot traffic areas only, and the 5mm is suitable for heavy foot traffic areas and light wheeled traffic e.g. car vehicles.

## Colours



Both versions of the chequer plate interlocking floor tiles are loose lay, and quick and easy to install with minimal sub floor preparation. All interlocking floor tiles are made from hard wearing PVC material that can withstand high point loading and impact and come with a 10 year product warranty.

Available in 10 standard colours

### Key Benefits:

-  Suitable for trucks, HGV's and heavy duty applications
-  Easy to install
-  Competitive rates
-  We offer a free site survey
-  UK Manufacturers
-  No damp proof membrane, screed or adhesives required
-  Reduces dust and noise
-  Excellent durability and slip resistance
-  Warm – insulates the floor



## Studded

The studded interlocking floor tile is the original version in the product range and is still popular in areas of heavy foot traffic. The studded tile has all the same characteristics as the textured dove tail floor tile, and is available in 5mm and 7mm.

The 5mm studded interlocking floor tiles can be used in light commercial environments and the 7mm would be more suited for factory and warehouse installations. Available in standard colours.

## Colours



### Key Benefits:

-  Quick & easy to install
-  No damp proof membrane, screed or adhesives required
-  Reduced VOC emissions
-  Non-Slip - R10



---

### Ramps, Edges & Corners

The range of interlocking floor tiles can also be supplied with edge and corner trims to create a mat area or provide safe and easy access for foot and wheel traffic.

Available in 4mm, 5mm, 7mm & 9mm thickness and 10 standard colours.

### Colours

				
Dark Grey RAL 7015	Light Grey RAL 7045	Black RAL 9004	Blue RAL 5005	Blue RAL 3020
				
Yellow RAL 1018	Green RAL 6005	Maroon RAL 3016	White RAL 9003	Beige RAL 1002

