



## SCREWDRIVER FUNCTION MODULE (SFM) WITH MAGAZINE

Combine the advantages of a pick-and-place system with the benefits of screw feeding via hose.

**Also available with a magazine solution – the screwdriver function module with electronic stroke (E-SFM)!**



# ADVANTAGES

## > Flexible

Accessibility of complex component geometries due to the maximum freedom of movement for robots and screwdriver function module with magazine.

## > Technical cleanliness

By separating the feeding system and screwdriver function module, fewer dirt particles are transferred to the component.

## > Efficient

- optimised cycle time and high output because time is saved by omitting one pick-up procedure per screw
- less wear because a flexible feed hose is not required
- in the case of robot applications, there is no need for the time-consuming integration of a feed hose

## > One system – multiple assembly directions

Whether from top to bottom, from bottom to top, horizontally or at a certain angle – the SFM with magazine makes any assembly direction possible without losing the position of the fastener.

## > Extremely well suited for

- top heavy screws
- difficult to reach screw positions with interfering contours

## > Short cycle times

The number of screws in the magazine can be adjusted to allow optimal preparation for the next assembly procedure.

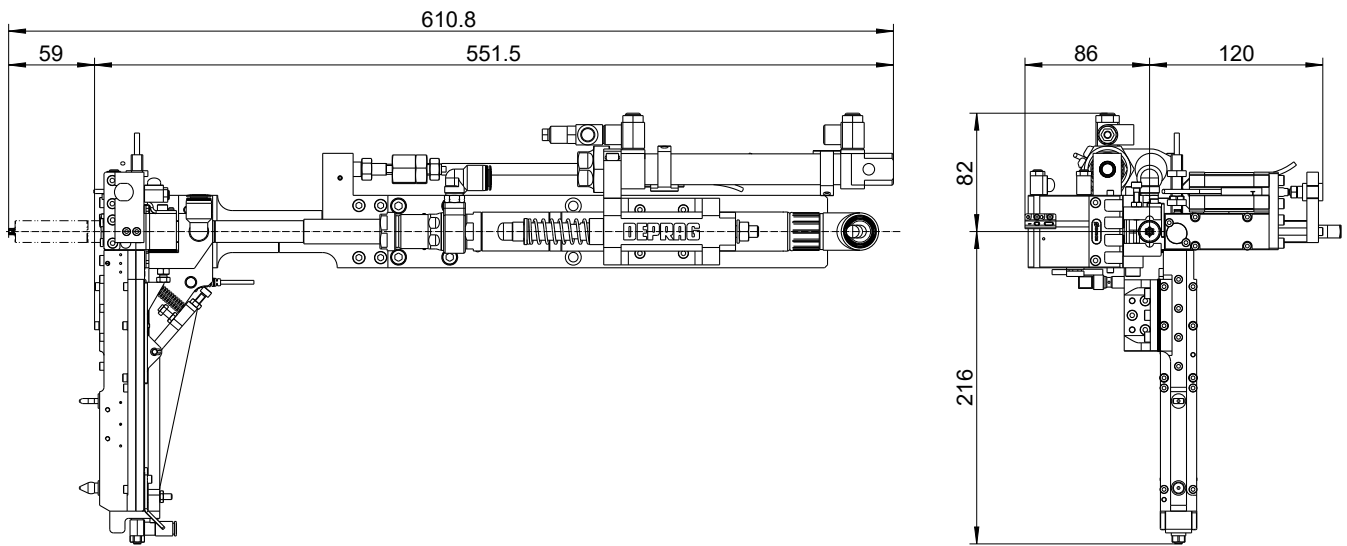
## > Suitable for lightweight robots

Due to its light weight, the SFM with magazine is ideally suited to applications which use lightweight robots.

## > Complete solution from a single source

The screwdriver function module with magazine can be combined with the DEPRAG step feeder systems or DEPRAG vibratory bowl feeder systems.

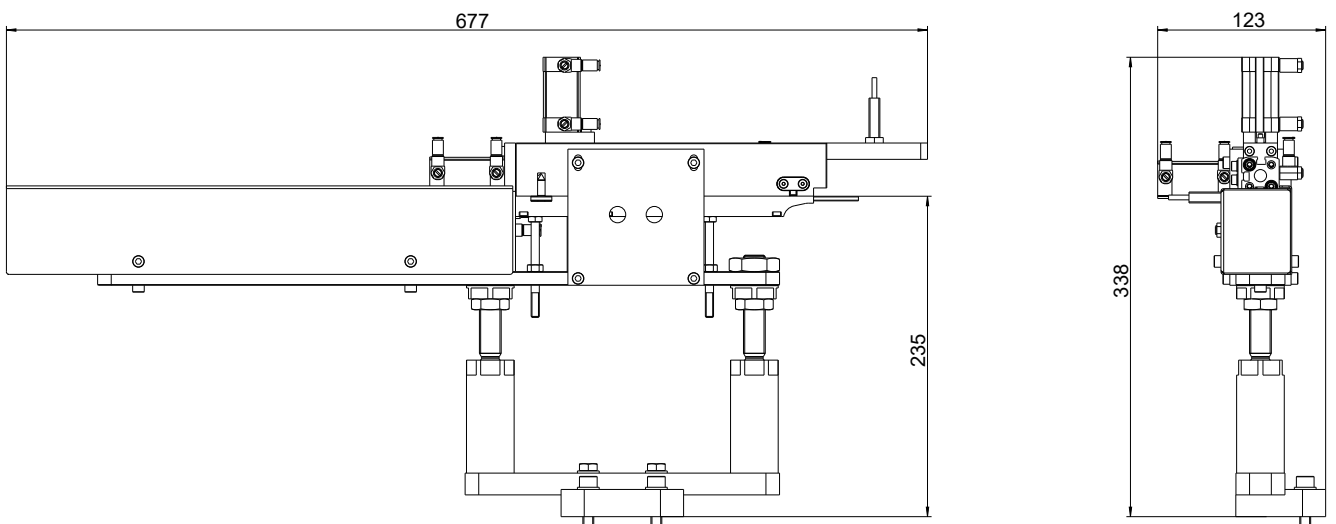
## Screwdriver function module



### Technical data

Max. torque	Nm	20, freely adjustable
Number of screws in magazine	pieces	15
Max. height of interfering contours	mm	59
Operating voltage	Volt	24
Operating pressure	bar	6
Dimensions	mm	see dimension sheet above
Weight	kg	6

## Back-up unit

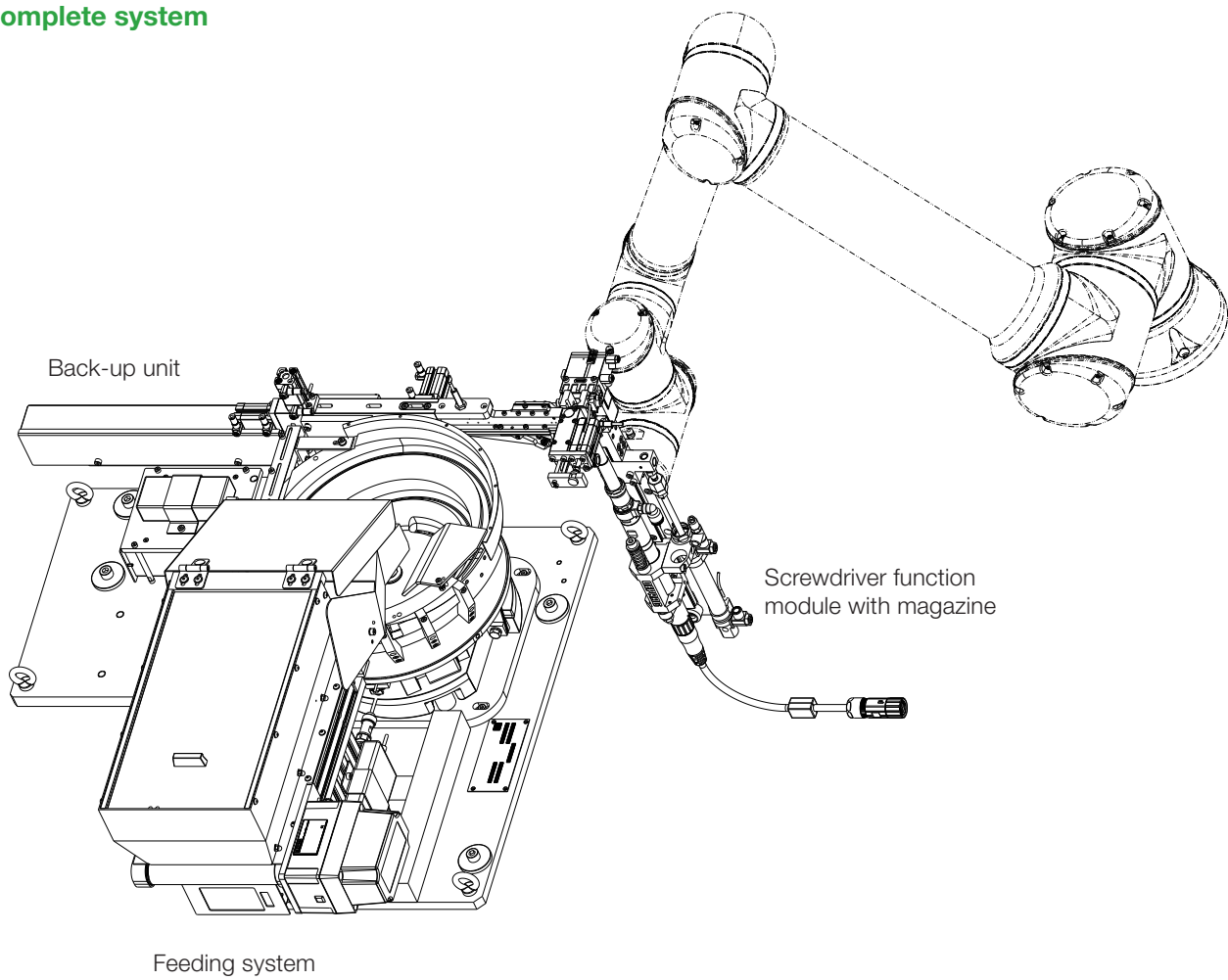


### Technical data

Max. number of screws	pieces	15, freely adjustable
Operating voltage	Volt	24
Operating pressure	bar	6
Dimensions	mm	see dimension sheet above
Weight	kg	8

➤ Customer-specific system designs are also available. Please contact us to discuss the right solution for you!

## Complete system



# DEPRAG

**DEPRAG SCHULZ GMBH u. CO.**

P.O. Box 1352, D-92203 Amberg, Germany  
Carl-Schulz-Platz 1, D-92224 Amberg  
Phone (+49) 9621 371-0, Fax (+49) 9621 371-120  
www.deprag.com  
info@deprag.de

D0064E | 02.2022